

IMPORTANT INFORMATION

IMPORTANT! Read this information before proceeding. It is the user's responsibility to take the following precautions at all times.

- Always stake or weight down your E-Z UP®. Do not use in any potentially windy or rainy weather. Wind and rain can damage the E-Z UP® Instant Shelter® and may also result in injury to you or others. Therefore, do not rely on shelter for protection in heavy or prolonged rain storms.
- The E-Z UP® Instant Shelter® is designed as a temporary shelter. Do not leave up for extended periods.
- Use caution when handling the E-Z UP® folding frame. Avoid pinching hands or fingers as frame opens or closes.
- Do not use shelter in a lightning storm.
- Do not leave your E-Z UP® Instant Shelter® unattended.
- Keep all flame and heat sources away from fabric top. Do not build fires within shelter enclosure.

Fire resistant - meets CPAI-84 requirements.

CARE AND MAINTENANCE

For long lasting durability and the best possible protection for your E-Z UP® Instant Shelter®, follow these E-Z care and maintenance instructions:

- Use a mild soap (not detergent) and plenty of water for top cleaning.
- Let the E-Z UP® top and frame dry completely before closing or storing to avoid mildew.
- Frame will operate and look better if occasionally wiped with silicone spray, especially before and after use in damp conditions. Remove excess silicone residue before applying top.
- Use a seam sealer if top leaks or drips water. Available at most sporting goods and hardware stores.
- Slightly tighten bolts if frame becomes loose.

For online warranty, service, parts and accessories as E-Z as 1-2-click, contact us at

www.ezup.com

Ask about our other E-Z UP® Instant Products™

Covered under one or more of the following patents: 4,607,656; 4,924,896; 5,244,001; 5,421,356; 5,485,863; 5,490,533; 5,511,572; 5,632,292; 5,632,293; 5,794,546; 5,797,412; 5,813,425; 5,865,127; 5,921,260; 5,934,301; 6,041,800; 6,070,604; 6,076,312; 6,129,102; 6,138,702; 6,192,910; 6,230,729; 6,240,940; 6,431,193; 6,439,251; 95704390; 94/2354; 91461; 132167; 95/0693; 95/6140; 95/6141; 84107895; 684,978; 2123096; 190486; 289754; 215344; 701077; 2128935; 2949648; 48648; DE 695 10 919 T2; WO96/03561. International Design Registration No. DM/009515 Benelux Design Registration No. 16959-04. Other US and foreign patents pending. © Copyright 2005 International E-Z UP, Inc. USA. All rights reserved.



PRODUCT

WARRANTY

INTERNATIONAL E-Z UP, INC., manufacturer of the E-Z UP® Instant Shelter®, warrants to the original purchaser who provides a dated sales receipt, each part of the E-Z UP® Instant Shelter® to be free from defects in material or workmanship for a period of **TWO YEARS** after the date of original purchase. This warranty applies only for normal and expected uses, as determined by the manufacturer. INTERNATIONAL E-Z UP, INC.'s obligation and liability under this warranty is limited to the repair or replacement (at its option) of the product or its parts, after its own review and examination.

RETURN ADVISORY - Before returning any part or product to INTERNATIONAL E-Z UP, INC. or its designated representative, please phone or write to obtain specific return shipping instructions. All shipping costs must be prepaid, and INTERNATIONAL E-Z UP, INC. is not responsible for products damaged in transit.

CONDITIONS - This warranty shall be void as to any product which has been altered or modified in any manner. This warranty does not apply to damages caused by wind, rain, or other forces of nature, not to accidental or deliberated damage of the product, nor to use of the product that does not conform with the product instructions.

This warranty is provided in lieu of all other warranties, expressed or implied.

We Make Life E-Z!™
INTERNATIONAL E-Z UP, INC.

1601 Iowa Avenue, Riverside, California 92507

(951) 781-0843 • Fax (951) 781-0586

www.ezup.com

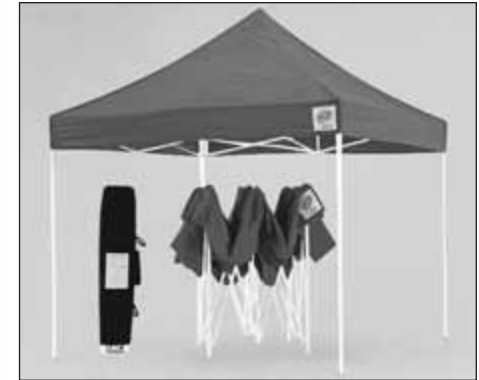
Customer Service Hot Line

800-45 SHADE

4 5 7 4 2 3 3

OWNER'S MANUAL

E-Z UP® INSTANT SHELTER®



"Sets Up in Seconds!"™

ENTERPRISE II™
COMMERCIAL

10' x 10'

Take time to learn how to provide years of durable and safe use from your E-Z UP® Instant Shelter®. After reading these instructions carefully, if you have any need of assistance, call our Customer Service Department.



Customer Service Hot Line

800-45 SHADE

4 5 7 4 2 3 3

www.ezup.com

WHAT'S IN THE BOX

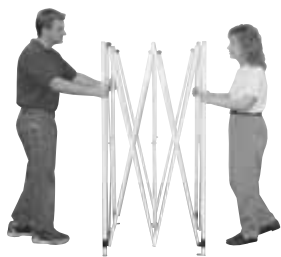
Please read each step before you attempt to set up. Save these instructions for future reference.

- 1 10' x 10' Frame
- 1 Polyester Top
- 4 Piece Stake Set

How To SET UP

*Note: First Time Top Attachment Is Required.

Top and frame are shipped unattached to avoid damage. A first time set up requires that top be bolted on to the frame. This first time set up takes longer than future set ups. Once top is permanently attached to frame, set up and take down are easily accomplished within seconds.



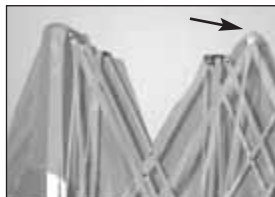
***1.** Place your E-Z UP® frame in the center of area to be shaded. With partner on opposite side, grasp two outer legs, slightly lift off ground and step backwards, stopping at full arms' length.



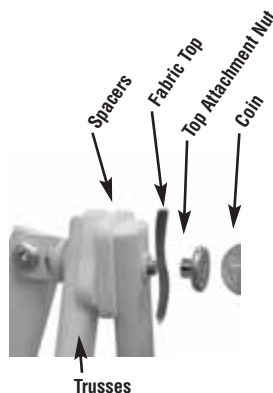
2. Gently unfold the fabric top and place it over the open frame.



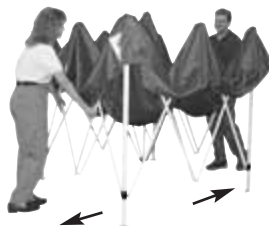
3. Attach the top to the E-Z UP® frame by matching the quick attachment strips on the top with the quick attachment strips on the frame. Pull the corners down fully. Push the strips firmly together at each corner.



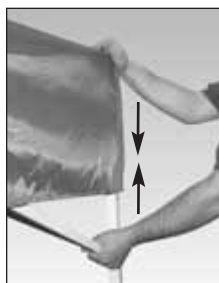
4. To secure the top to frame, line up grommet holes on valance with the bolts on frame.



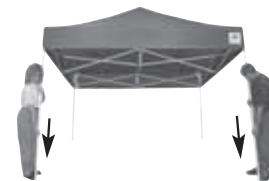
***5.** Unscrew top attachment nut from bolt. Place grommated fabric top over the bolt, screw on top attachment nut and tighten until snug. **Top should rotate easily - do not overtighten.** Repeat this procedure on the remaining grommets.



***6.** Grasp the bottom of the diamond shaped area of trusses on opposite sides by the "open" sticker. Lift up and step backwards until shelter is fully opened, **being careful not to pinch fingers.**



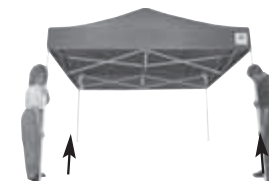
***7.** Engage the auto slider at each corner by pushing up with one hand while holding down the top of the leg with the other hand. The pull pin will engage the hole. Then pull down the hem of the top. Repeat at all four corners.



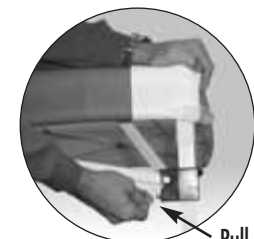
***8.** Lift two adjacent outer legs up 1" and slide out the inner legs until the snap button locks. Repeat on the opposite legs - make sure to do two legs at a time.

***Note: Once top is permanently attached, only perform steps 1 and 6 - 8 to set up.**

How To TAKE DOWN

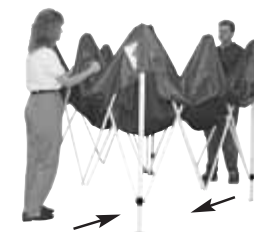


1. With partner, slightly lift up two adjacent outer legs 1", depress snap button and telescope inner legs into outer legs. Repeat on the opposite legs - making sure to do two legs at a time.



Pull Pin

2. Release pull pin at each corner by first lifting valance fabric away from slider. With one hand hold the top of the leg while pulling the pin out to release.



3. Grasp the top diamond on opposite sides by "close" sticker. Lift the shelter up slightly and shake it while stepping towards your partner until the unit is 3/4 closed. With each partner grasping two outer legs, push frame together to fully close it - Be careful not to pinch fingers. Store shelter in roller bag.