

IMPORTANT INFORMATION

IMPORTANT! Read this information before proceeding. It is the user's responsibility to take the following precautions at all times.

- Always stake or weight down your E-Z UP®. Do not use in any potentially windy or rainy weather. Wind and rain can damage the E-Z UP® Instant Shelter® and may also result in injury to you or others. Therefore, do not rely on shelter for protection in heavy or prolonged rain storms.
- The E-Z UP® Instant Shelter® is designed as a temporary shelter. Do not leave up for extended periods.
- Use caution when handling the E-Z UP® folding frame. Avoid pinching hands or fingers as frame opens or closes.
- Do not use shelter in a lightning storm.
- Do not leave your E-Z UP® Instant Shelter® unattended.
- Do not build fires within shelter enclosure.

WARNING: Keep all flame and heat sources away from this top fabric. This top meets the flammability requirements of CPAI-84. The fabric may burn if left in continuous contact with any flame source. The application of any foreign substance to the top may render the flame-resistant properties ineffective.

CARE AND MAINTENANCE

For long lasting durability and the best possible protection for your E-Z UP® Instant Shelter®, follow these E-Z care and maintenance instructions:

- Use a mild soap (not detergent) and plenty of water for top cleaning.
- Let the E-Z UP® top and frame dry completely before closing or storing to avoid mildew.
- Frame will operate and look better if occasionally wiped with silicone spray, especially before and after use in damp conditions. Remove excess silicone residue before applying top.
- Use a seam sealer if top leaks or drips water. Available at most sporting goods and hardware stores.
- Slightly tighten bolts if frame becomes loose.

For online warranty, service, parts and accessories as E-Z as 1-2-click, contact us at

www.ezup.com

Ask about our other E-Z UP® Instant Products™

Covered under one or more of the following patents: 4,607,656; 4,924,896; 5,244,001; 5,421,356; 5,485,863; 5,490,533; 5,511,572; 5,632,292; 5,632,293; 5,794,546; 5,797,412; 5,865,127; 5,921,260; 5,934,301; 6,041,800; 6,070,604; 6,076,312; 6,129,102; 6,230,729; 6,240,940; 6,431,193; 6,439,251; 6,601,599; 95-704390/94/2354; 91461; 132167; 95/0693; 95/6140; 95/6141; 84107895; 684,978; 2123096; 190486; 289754; 215344; 701077; 2128935; 2949648; 48648; DE 695 10 919 T2, W096/03561.

International Design Registration No. DM/009515. Benelux Design Registration No.16959-04. Other US and foreign patents pending.

© Copyright 2006 International E-Z UP, Inc. All rights reserved.

0V025-07-800



1 YEAR WARRANTY

INTERNATIONAL E-Z UP, INC., manufacturer of the E-Z UP® Instant Shelter®, warrants to the original purchaser who provides a dated sales receipt, each part of the E-Z UP® Instant Shelter® to be free from defects in material or workmanship for a period of one year after the date of original purchase. The E-Z UP® SPORTSTER™ frame is covered under a limited one year warranty and guarantees the frame to be free from defects in material or workmanship. This warranty applies only for normal and expected uses, as determined by the manufacturer.

INTERNATIONAL E-Z UP, INC.'s obligation and liability under this warranty is limited to the repair or replacement (at its option) of the product or its parts, after its own review and examination.

RETURN ADVISORY - Before returning any part or product to INTERNATIONAL E-Z UP, INC. or its designated representative, please phone or write to obtain specific return shipping instructions. All shipping costs must be prepaid, and INTERNATIONAL E-Z UP, INC. is not responsible for products damaged in transit.

CONDITIONS - This warranty shall be void as to any product which has been altered or modified in any manner. This warranty does not apply to damages caused by wind, rain, or other forces of nature, not to accidental or deliberated damage of the product, nor to use of the product that does not conform with the product instructions.

This warranty is provided in lieu of all other warranties, expressed or implied.

We Make Life E-Z!™ INTERNATIONAL E-Z UP, INC.

1650 Iowa Avenue Ste. 200, Riverside, California 92507
(909) 426-0060 • Fax (909) 426-0063

www.ezupdirect.com

Customer Service Hot Line

800-SHADE ME

7 4 2 3 3 6 3

OWNER'S MANUAL

E-Z UP® INSTANT SHELTER®



"Sets Up in Seconds!™"

Sportster™

8' x 8' x 8'

Take time to learn how to provide years of durable and safe use from your E-Z UP® Instant Shelter®. After reading these instructions carefully, if you have any need of assistance, call our Customer Service Department.



Customer Service Hot Line

(800) SHADE ME

7 4 2 3 3 6 3

www.ezupdirect.com

WHAT'S IN THE BOX

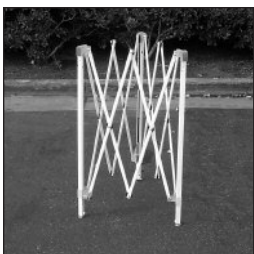
Please read each step before you attempt to set up. Save these instructions for future reference.

- Sportster™ Frame
- Carry Bag
- 3 Piece Stake Kit
- Polyester Top with Sun Catchers™

HOW TO SET UP

*Note: First time top attachment is required.

Top and frame are shipped unattached to avoid damage. The first time you set up your Instant Shelter®, the top must be attached to the frame with Hook & Loop strips. Once top is attached, set up and take down are easily accomplished within seconds.



1. Place your E-Z UP® frame in the center of area to be shaded. Grasp the outer legs, slightly lift off the ground and step backwards, stopping at full arms length.



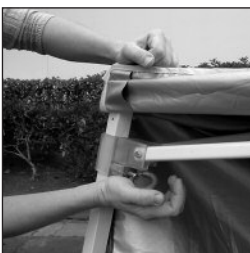
***2.** Gently unfold the fabric top and place it over the open frame. Position the hooks on the Sun Catchers™ toward the pull pin auto slider at the rear leg.



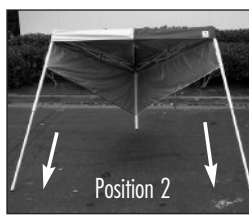
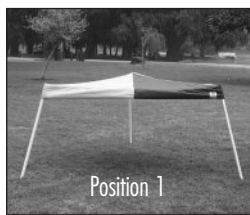
***3.** Secure the top to the frame by pulling the valance down and matching Hook & Loop strips on the top with the strips on the frame. Press firmly together at each of the three corners.



4. Grasp the top and bottom of diamond-shaped area of trusses by “open” sticker. Slightly lift shelter up and push hands together while stepping backwards until shelter is fully opened. **Be careful not to pinch fingers or pull backwards too hard.**



5. Engage auto-slider at rear corner by pushing up on slider with one hand while pushing down on top of leg with other hand until pull pin engages. Pull down hem of top. Secure all Hook & Loop strips



6. Position 1: Leave all legs depressed for low profile position for use at the Beach and open areas.

Position 2: Lift outer legs and pull out inner legs until snap button locks. Lift remaining outer leg if desired in full upright position.

Use stakes located in the top of each leg to secure in breezy conditions.



7. If Sun Catchers™ are required in the down position, secure hooks in holes on rear leg.

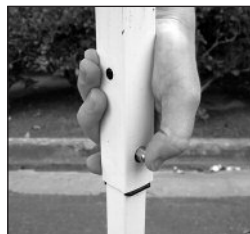
NOTE: Hooks MUST be removed before collapsing rear leg or damage may occur.



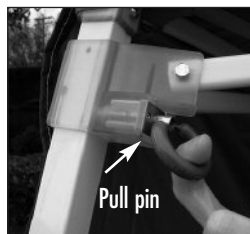
8. Your stake kit can be conveniently stored in the top of each leg. Simply detach top from frame and place stake into the top of each leg as shown opposite.

***NOTE: ONCE TOP IS PERMANENTLY ATTACHED, ONLY PERFORM STEP 1 AND 4 - 7.**

HOW TO TAKE DOWN



1. Remove Sun Catcher™ hooks from rear leg. Release snap button on all three legs. Telescope inner legs into outer legs.



2. Release the pull pin at rear corner by first lifting hem of top. With one hand, pull pin out to release.

Note: All Hook & Loop strips attached to trusses MUST be released or damage may occur.



3. Grasp top and bottom of diamond-shaped area of trusses by “close” sticker and slightly lift up. Shake shelter slightly, pulling hands apart, until you are able to close shelter with your hands completely.

CARRY BAG



1. Close your E-Z UP® Instant Shelter completely.

2. Open the carry bag by unzipping bag on end. Place open end of bag over the top of your E-Z UP® Instant Shelter, ensuring that the triangular shape of both the Carry Bag and E-Z UP® Instant Shelter line up.

3. Turn E-Z UP® Instant Shelter® upside-down by carefully placing it on its side. With knees bent place hands underneath the shelter, lift and walk forward until it is upright. Note: Make sure to bend your knees slightly so back strain does not occur.

4. Zip Bag closed. Carry Bag is designed to be carried either over the shoulder or at your side.